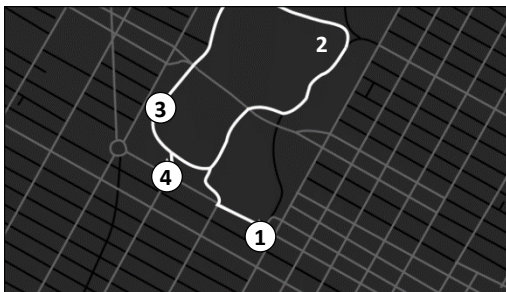


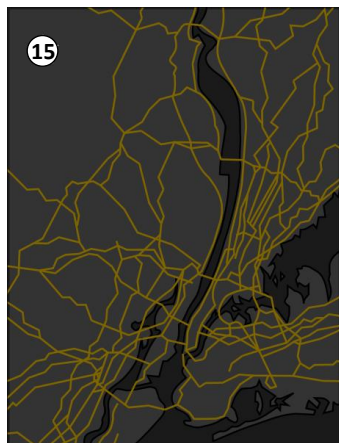
Lower Central Park



After having tea at the (1) **Plaza Hotel**, Nick and Jordan Baker (2) **drive through Central Park** together during a sunset, and pass under an (3) **arch** before Nick (4) **kisses** Jordan as they leave the park.

The (1) **Plaza Hotel** in Midtown Manhattan is also where Jordan Baker tells Nick about Jay Gatsby's feelings for Daisy, and is the location where Daisy's husband, Tom, confronts Gatsby about his affair with her.

New York State



For some time, Nick and Jordan Baker lose contact with one another early in the summer, however they reconnect at a house party outside of the city, in (15) **Warwick, New York**.

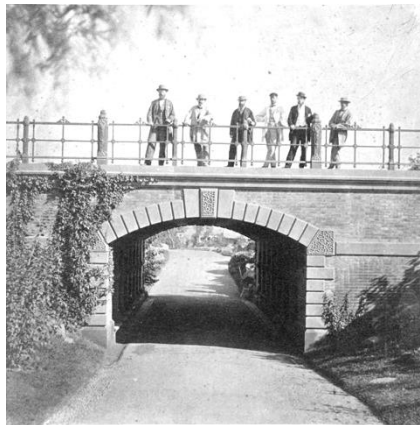
4



ABOVE: A photo of cars and carriages driving by and through *Central Park* in 1922 – which is the year which the story is set in.

Photo downloaded from:
The New York Public Library Digital Collections
Image ID: 718217F

<https://digitalcollections.nypl.org/items/510d47dd-2eeb-a3d9-e040-e00a18064a9>



ABOVE: *Willowdell Arch* in Central Park is one of two arches that are old enough to be what Nick and Jordan would have driven through. (The other potential arch is *Greyshot Arch*.)

Photo downloaded from:
The New York Public Library Digital Collections
Image ID: 1558117

<https://digitalcollections.nypl.org/items/510d47e2-f275-a3d9-e040-e00a18064a99>



The Great Gatsby

By Francis Scott Fitzgerald

Brochure 1: Manhattan



Put together by Rachael Reitano
Email: admin@thegreatgatsbytour.com

The USA



Nick Carraway leaves from (1) **Saint Paul, Minnesota** to (2) **New York City** by train, and makes a brief stop in (3) **Chicago** to meet with acquaintances while on the way.

Lower Manhattan

In New York City, Nick works in Lower Manhattan's (1) **Financial District**.

Nick uses (2) **Pennsylvania Station (Penn Station)** to commute around Greater New York.

Nick describes how he often walks up (3) **Fifth Avenue** from the Financial District and admires the city's beautiful women.

After work, Nick eats at the (4) **Yale Club**, and uses the club's library to study before walking to Penn Station to commute home.

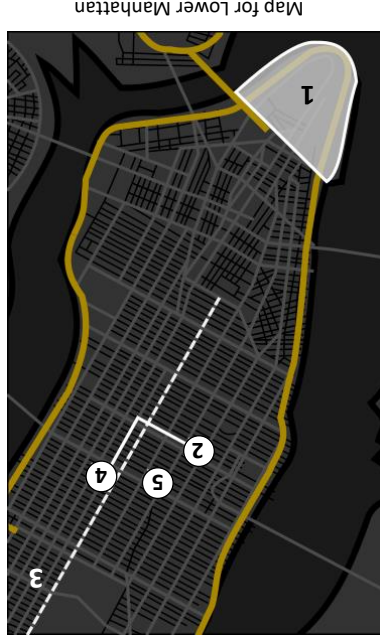
Jay Gatsby introduces Nick to Meyer Wolfsheimer over lunch inside a cellar on 42nd Street in Midtown, Manhattan - across from the *Hotel Metropole*. Today, the hotel has been demolished and is now replaced with (5) **Times Square Tower**.



ABOVE: A photo of the *Hotel Metropole* in 1885, at Broadway and 41st Street, which was demolished and replaced with *Times Square Tower*.

Photo downloaded from:
The New York Public Library Digital Collections
Image ID: 717469F

<https://digitalcollections.nypl.org/items/510d47dd-2913-a3d9-e040-e00a18064a99>



Not long after reconnecting with Daisy and her husband Tom, Nick and Tom go into Manhattan together with the woman Tom is having an affair with - Myrtle. In the city, they arrive at (1) **Penn Station**, then take a taxi (2) **up Fifth Avenue before veering onto Park Avenue and continuing up to 158th Street** arrive at a row of white apartment houses.

At (3) **158th Street**, Nick begins drinking with Tom, Myrtle, and everyone who was invited to join. Nick also goes to a nearby corner store to purchase cigarettes, and he has an urge to walk east - towards the park down the street. However, he chooses to stay with the company he came with instead.

After a night of drinking, Nick walks (4) **down Broadway from 158th Street to Penn Station** and takes the 4 am train back to Long Island - where he lives.



Upper Manhattan

Queens: Flushing Meadows



(1) Flushing Meadows Corona Park sits between Manhattan and where Nick and Daisy live in Long Island. In the past, this was the location of a dump site for garbage and ashes from the city. In the novel, this is the setting for the “*Valley of the Ashes*”, where Myrtle lives with her husband, George.



Daisy’s husband, Tom, regularly gets off of the train into Manhattan while it is delayed by a drawbridge in Queens. After disembarking and crossing **(2) the railroad fence**, he walks to visit Myrtle at her home to invite her into the city to have hidden affairs.

Myrtle is described as living with her husband, George, in a yellow-brick building on the **(3) edge** of what is left of the town.



ABOVE: A photo of the railroad tracks that ran through the dump site at what is known in the novel as *The Valley of the Ashes* - which now *Flushing Meadows Corona Park* in Queens.

Photo downloaded from:
The New York Public Library Digital Collections
Image ID: **725792F**

<https://digitalcollections.nypl.org/items/510d47dd-6a14-a3d9-e040-e00a18064a99>



ABOVE: A photo of the town on the edge of *The Valley of the Ashes*, and the short fence that ran through it. This photo was taken at Roosevelt Avenue and Main Street within Queens.

Photo downloaded from:
The New York Public Library Digital Collections
Image ID: **727938F**

<https://digitalcollections.nypl.org/items/510d47dd-7ad2-a3d9-e040-e00a18064a99>



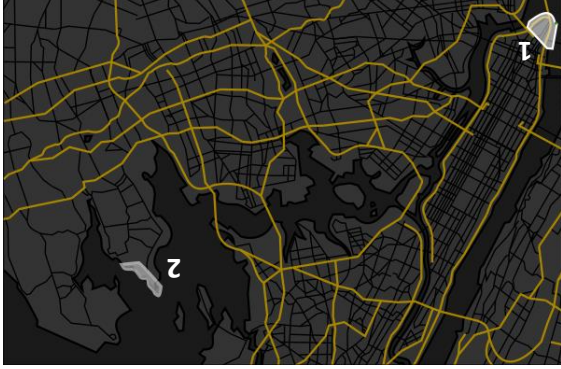
The Great Gatsby By Francis Scott Fitzgerald

Brochure 2: Long Island & Queens

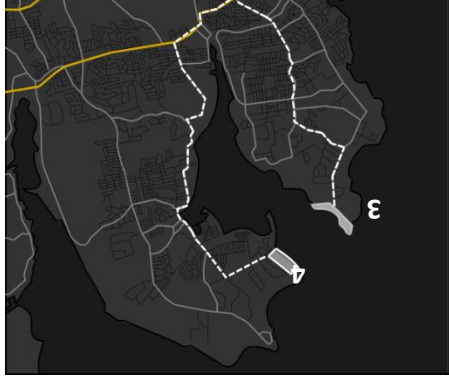


Put together by Rachael Reitano
Email: admin@thegreatgatsbytour.com

Long Island Kings Point and Sands Point



Soon after arriving to new York, a coworker who works with Nick in the (1) **Financial District** asks to room together in a commuting town 20 minutes east of Manhattan: West Egg – which is a fictional town for (2) **Kings Point** in Great Neck, Long Island.

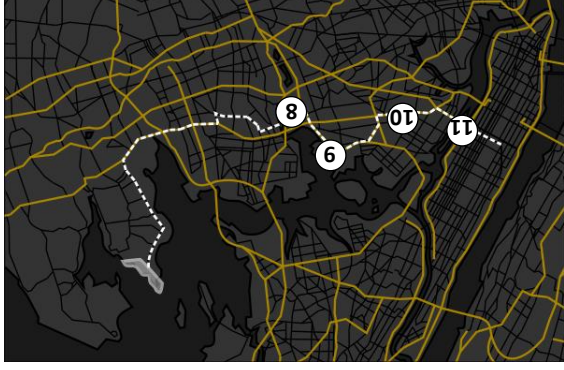


(3) **Nick's home** is described as being situated on the bay side coast, between two mansions at the end of the peninsula. The mansion on his right is Jay Gatsby's home.

Daisy, who is Nick's second cousin, lives with her spouse, Tom, in East Egg – which is a fictional town for (4) **Sands Point, Long Island**. Daisy's home is visible from Nick's home across the bay.



Nick regularly takes the train from (5) **Great Neck Train Station** into Manhattan to go to work in the Financial District. The train usually gets delayed at a (6) **drawbridge in Queens**, and also passes by (7) **The National Biscuit Company** during the commute, which is known as "*Nabisco*" today.



On their way to meet with Wolfshelm over lunch, Gatsby and Nick drive into Manhattan by passing through (8) **Flushing Meadows, Queens**. They then pass by the (9) **sea ports** speeding in (10) **Astoria**. After, they cross over Blackwell's Island – which is now called Roosevelt Island – via the (11) **Queensboro Bridge**.



Later in the novel, Myrtle's husband – George – travels to attack Jay Gatsby, and is described as walking his way through the (12) **lower part of Great Neck**, inquiring people passing by about where Gatsby lives.

After Jay Gatsby is murdered by George, a (13) **funeral procession** occurs from Gatsby's mansion to (14) **Lawrence Cemetery**, where he is buried alone.